

Welcome!

Public Consultation Centre



Over the next 20 years, the airport will continue to become much more than a place to catch a flight - it could be a hub for buses, trains, and light rail, a centre for good local jobs in aviation and aerospace, and a gateway that connects us to the world.

Thank you for attending today! Your input will help guide the development of the **Airport Growth Plan** - a long-term vision document that outlines how the airport grows in a way that supports our community, protects the environment, and keeps Waterloo Region moving forward.



If you could use 1 word to describe YKF, what would it be?

Grab a sticky note and let us know!

About the Airport Growth Plan

The **Airport Growth Plan** is a long-term document that outlines the way YKF will grow over the next 20+ years. The last YKF Growth Plan was approved by Regional Council in 2017 and led to significant investment in the airport - including this terminal expansion that can support up to 1 million passengers a year!



The Airport Growth Plan looks to understand how YKF will meet the travel needs of our own growing community, continue to support our evolving aviation and aerospace sector - sustainably and responsibly!

Your input today will help guide the development of the Airport Growth Plan, which will seek approval from Regional Council in 2026.

YKF as a Transportation Hub

Think about YKF as a Hub for getting around Waterloo Region and beyond...

How important do you think it is that YKF be a central point for other modes of transportation beyond flights?

Place a dot on all the transportation options you'd like to see connect at YKF:

Inter-City Train
(i.e. GO Train, VIA)

Carshare

Bus

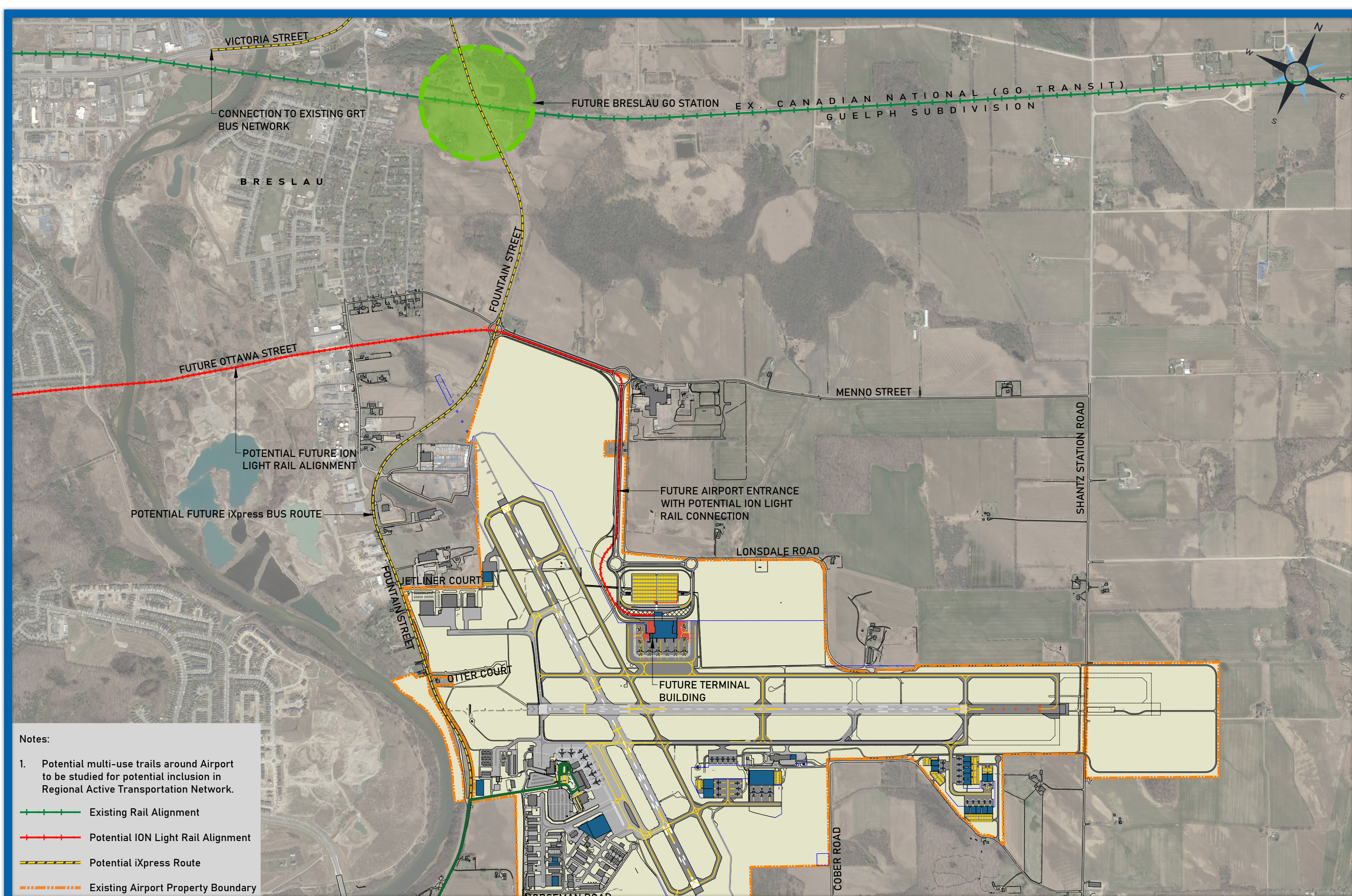
Light Rail Transit

Bicycle/Trail Connection

Other

Grab a sticky note and let us know!

Possible Future Transit Connection to YKF

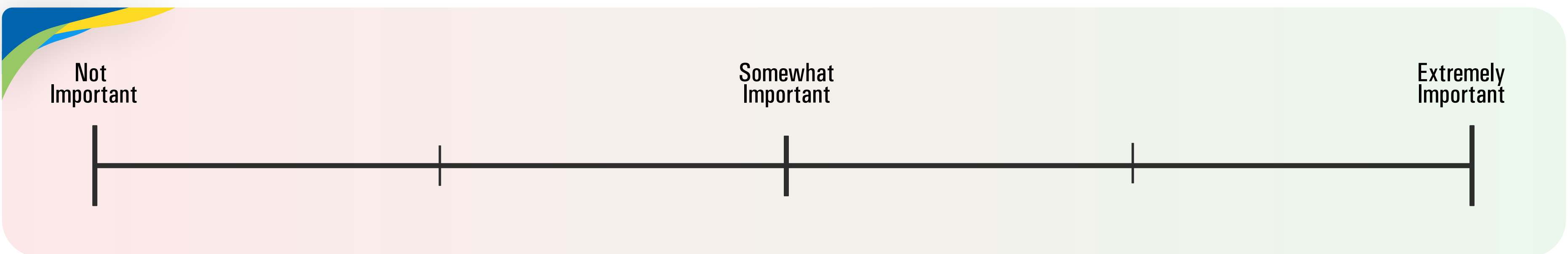


YKF as a Business Hub

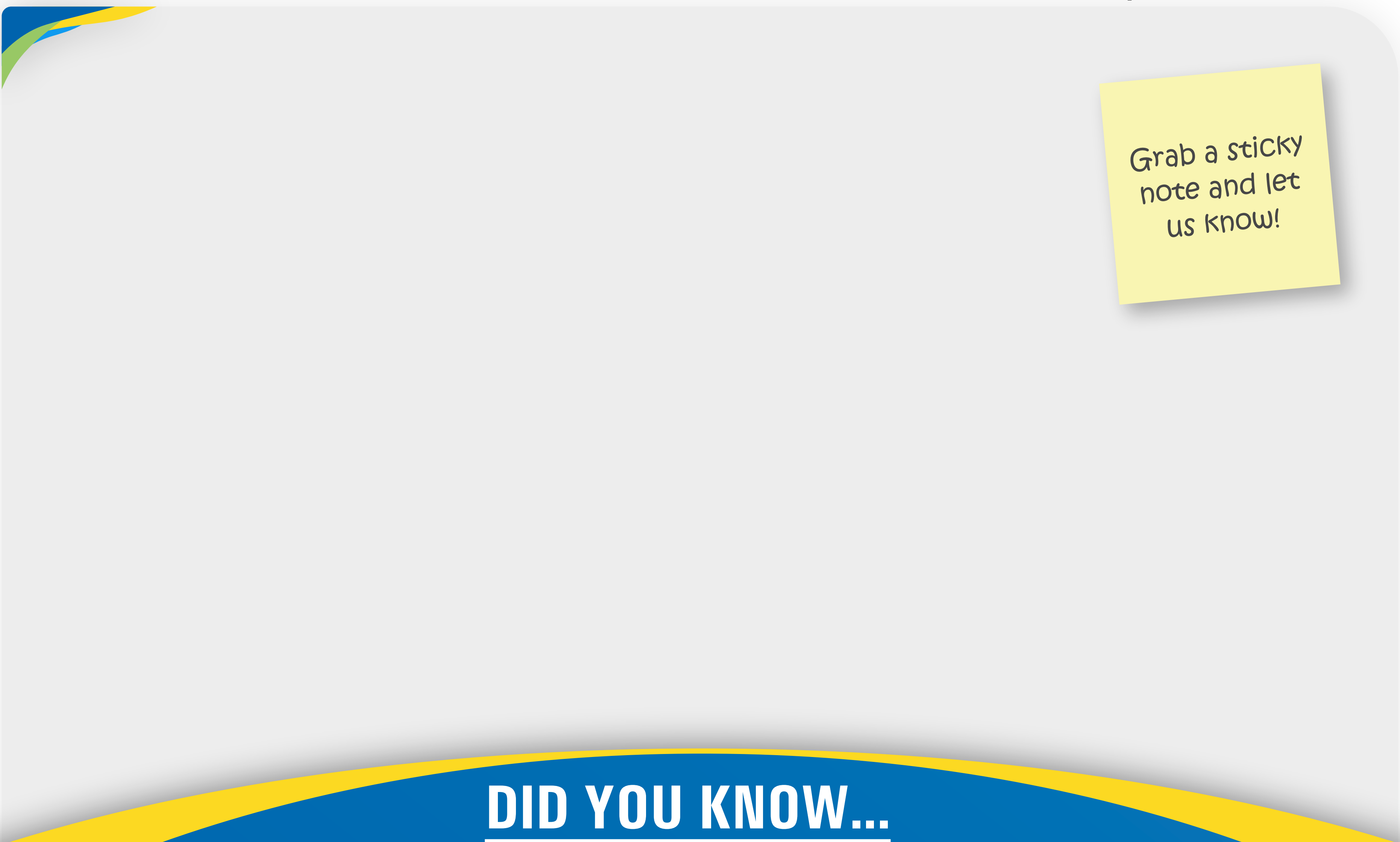
YKF is a catalyst to attract and grow Waterloo Region's Aviation and Aerospace sector. From training pilots to creating new technology, supporting local manufacturing and medical transport, over 44 aviation and aerospace businesses are part of YKF and even more are spread across Waterloo Region.

How important is it that the Region of Waterloo & YKF invest in the growth of Waterloo Region's Aviation and Aerospace industry?

Place a **dot** to let us know your opinion...



...or write a **sticky note** to tell us more!



A large grey rounded rectangle representing a sticky note area. In the top right corner, there is a yellow sticky note graphic with the text: "Grab a sticky note and let us know!"

DID YOU KNOW...

In 2023, YKF's total annual operations generated:

- \$390 million in total economic output
- 1,360 jobs and \$100 million in wages, including 660 jobs at YKF
- \$170 million in Gross Domestic Product (GDP)
- \$28 million in tax revenue (local, provincial and federal)

Nearly 20% of Canada's commercial pilot licenses are earned by Waterloo Wellington Flight Centre graduates!

Planning for Future Development

YKF uses a “just-in-time” approach to new infrastructure, instead of a “build it and they will come” approach. This means projects, like a new terminal building, are carefully planned in advance, but construction only happens when the trigger-point is reached, i.e. passenger numbers reach certain milestones.

This way, growth pays for growth, and we avoid spending on major projects before they are truly needed.

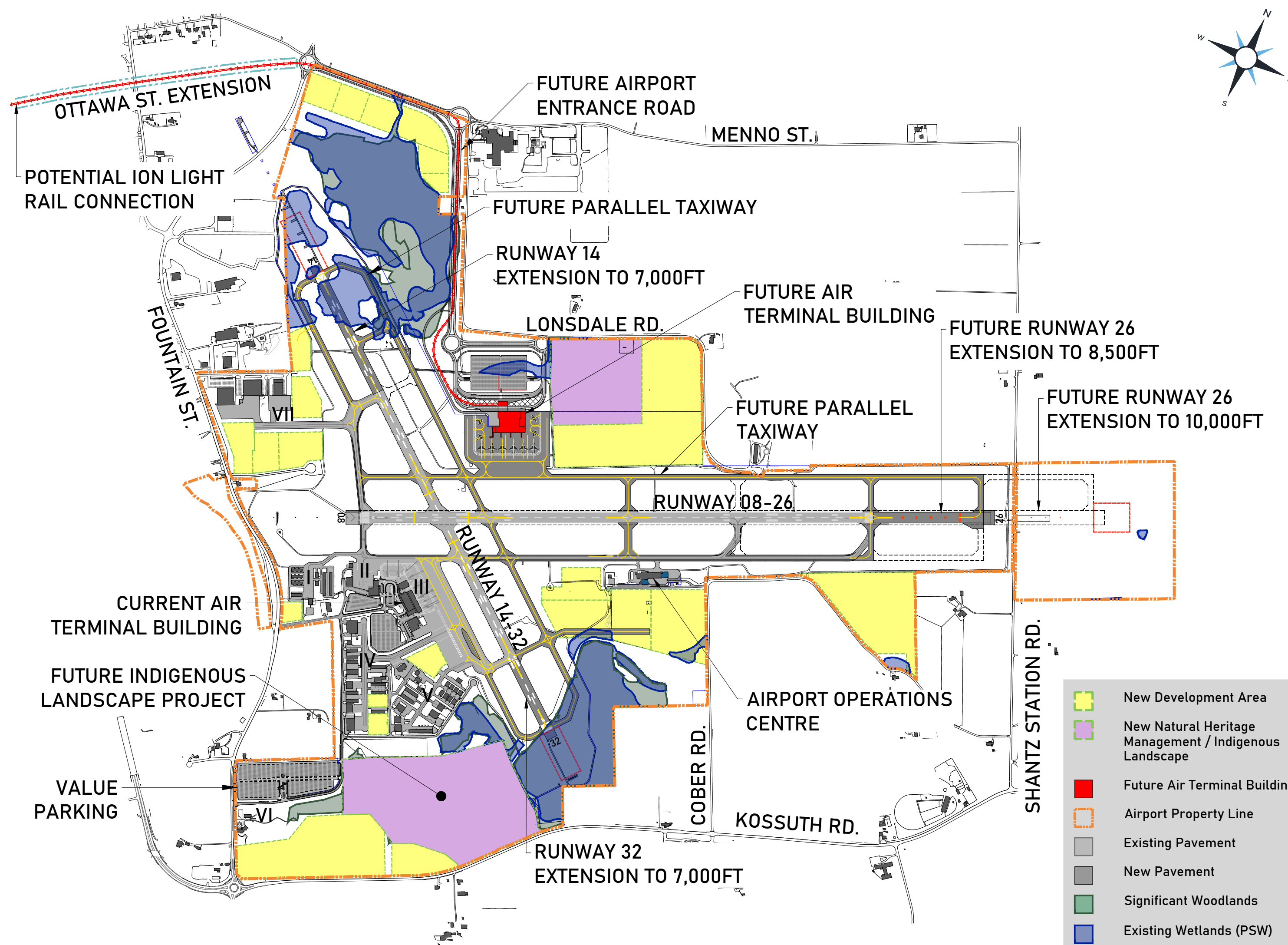
Do you support a “build as needed” approach to future airport development?

Place a **checkmark** in the box that reflects your opinion:

No,
I support a “build and they will come” approach

Yes,
I support a “build as needed” approach

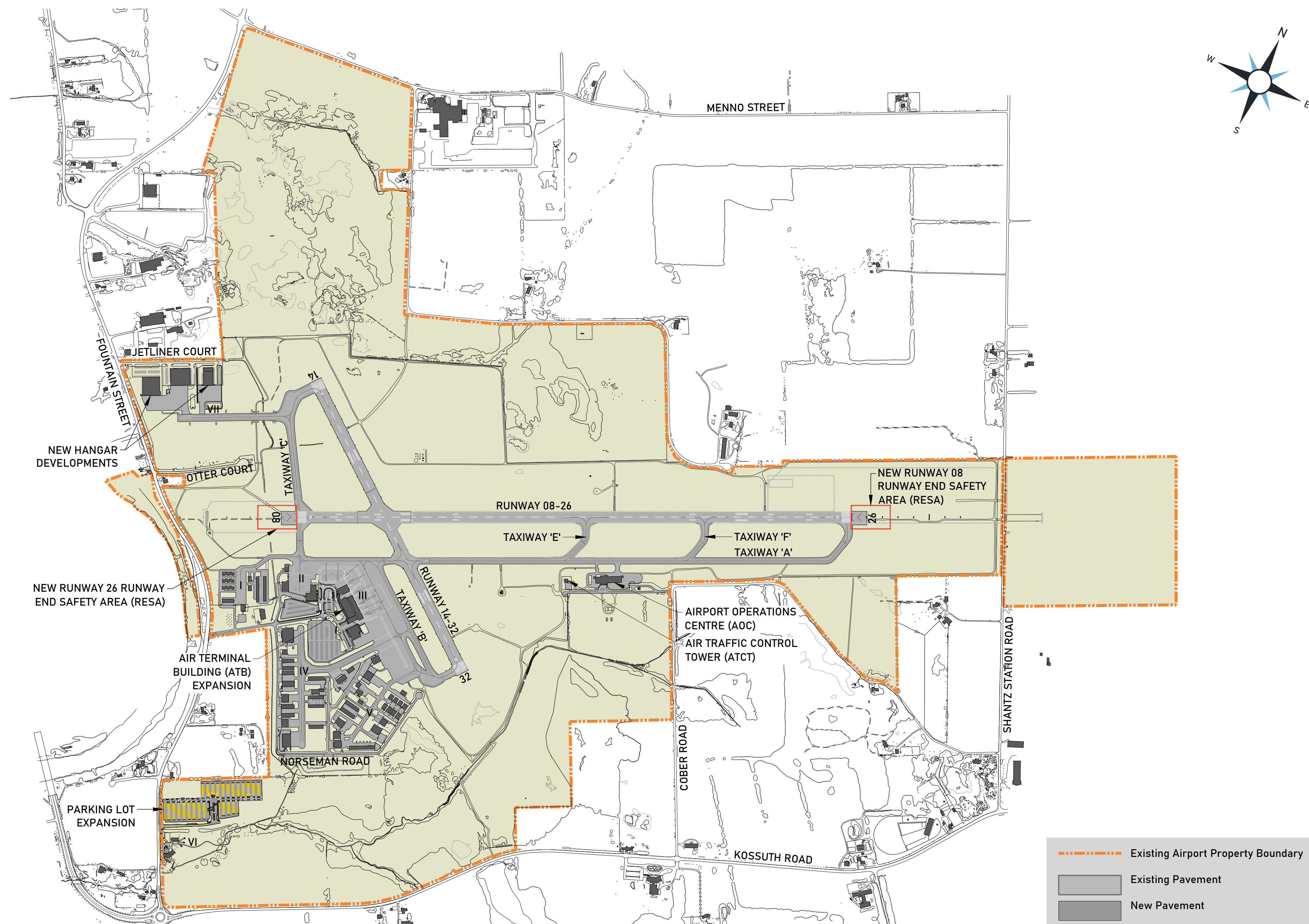
Future Development Map



Trigger-based Infrastructure Planning

The following stages outline the way the airport will approach new investment in infrastructure (1/4)

Stage 1 Completed since 2017

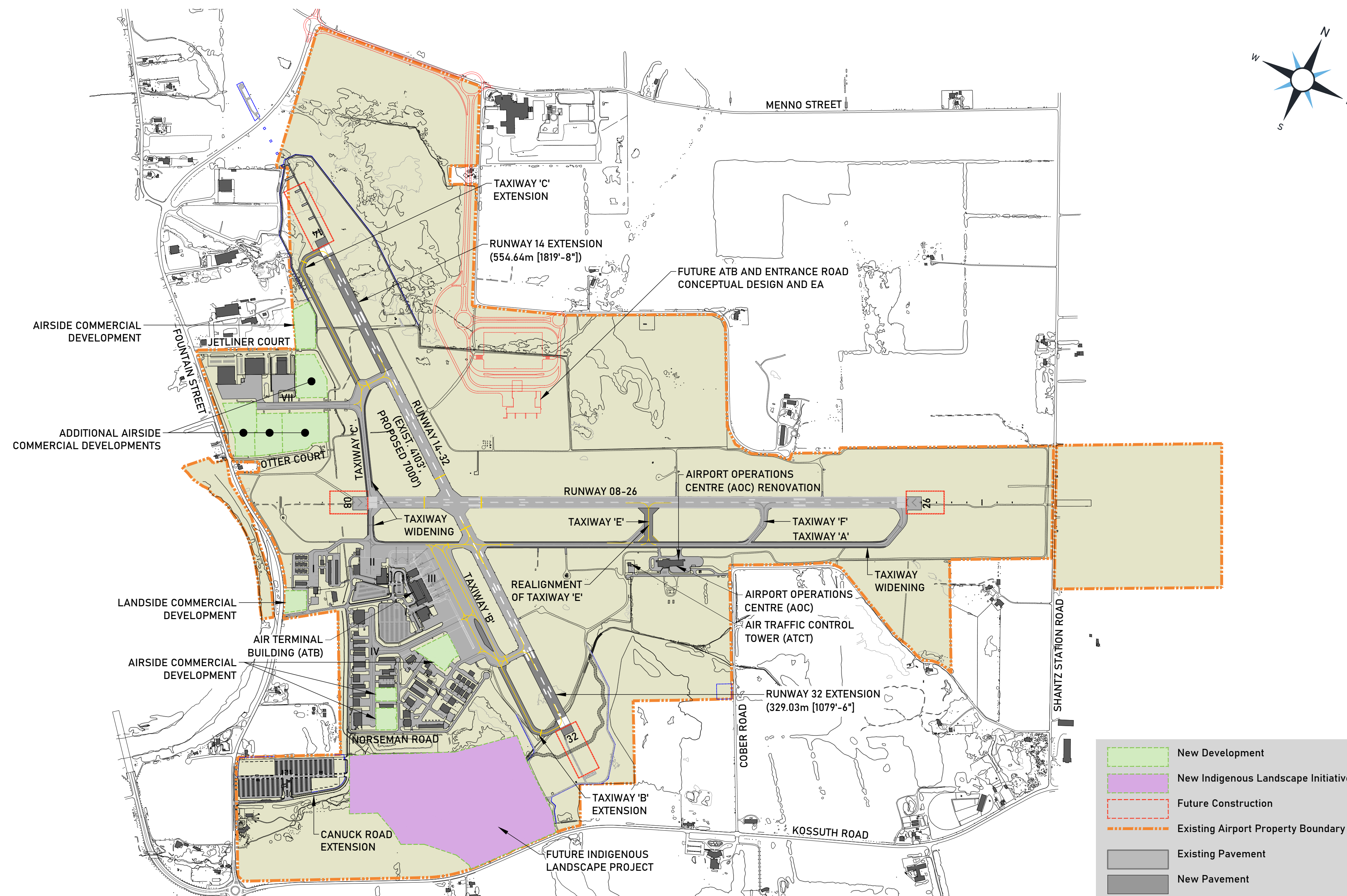


- Construct terminal building expansion to accommodate up to 1 Million Annual Passengers
- Design Runway 14-32 Extension
- Initiate Airport Zoning Regulations update
- Terminal Site Selection Study
- Master Servicing Study
- Expand surface parking
- Additional tenant development

Trigger-based Infrastructure Planning

The following stages outline the way the airport will approach new investment in infrastructure (2/4)

Stage 2 Trigger: Approval of the Airport Growth Plan, with additional project specific requirements

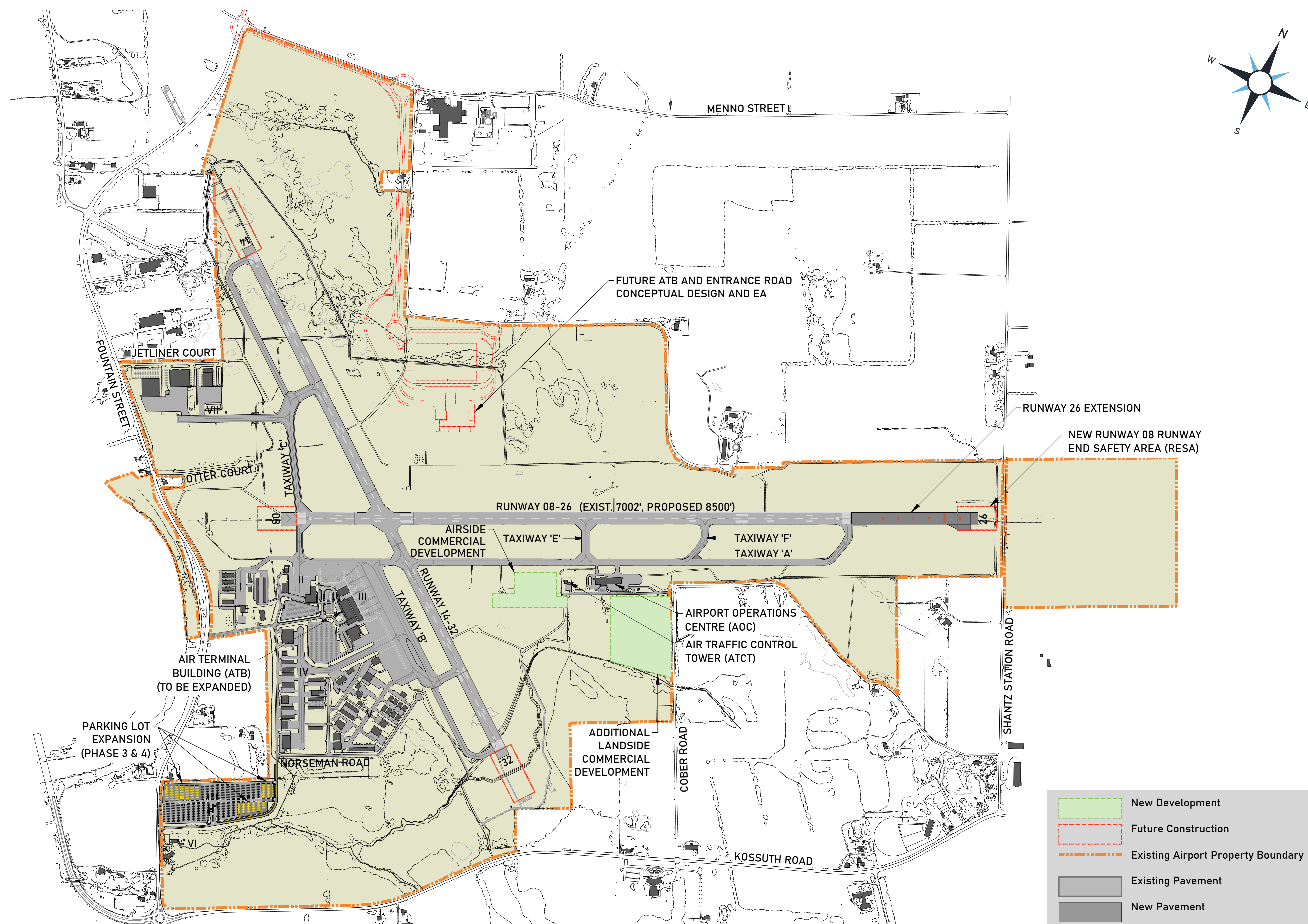


- Construct Runway 14-32 Extension
- Design Runway 08-26 Extension
- Design terminal building expansion to 1.5 Million Annual Passengers
- Construct widening of taxiways
- Conceptual design for future terminal building
- Environmental Assessment for future terminal entrance road
- Service lands

Trigger-based Infrastructure Planning

The following stages outline the way the airport will approach new investment in infrastructure (3/4)

Stage 3 Trigger: 1 Million Annual Passengers

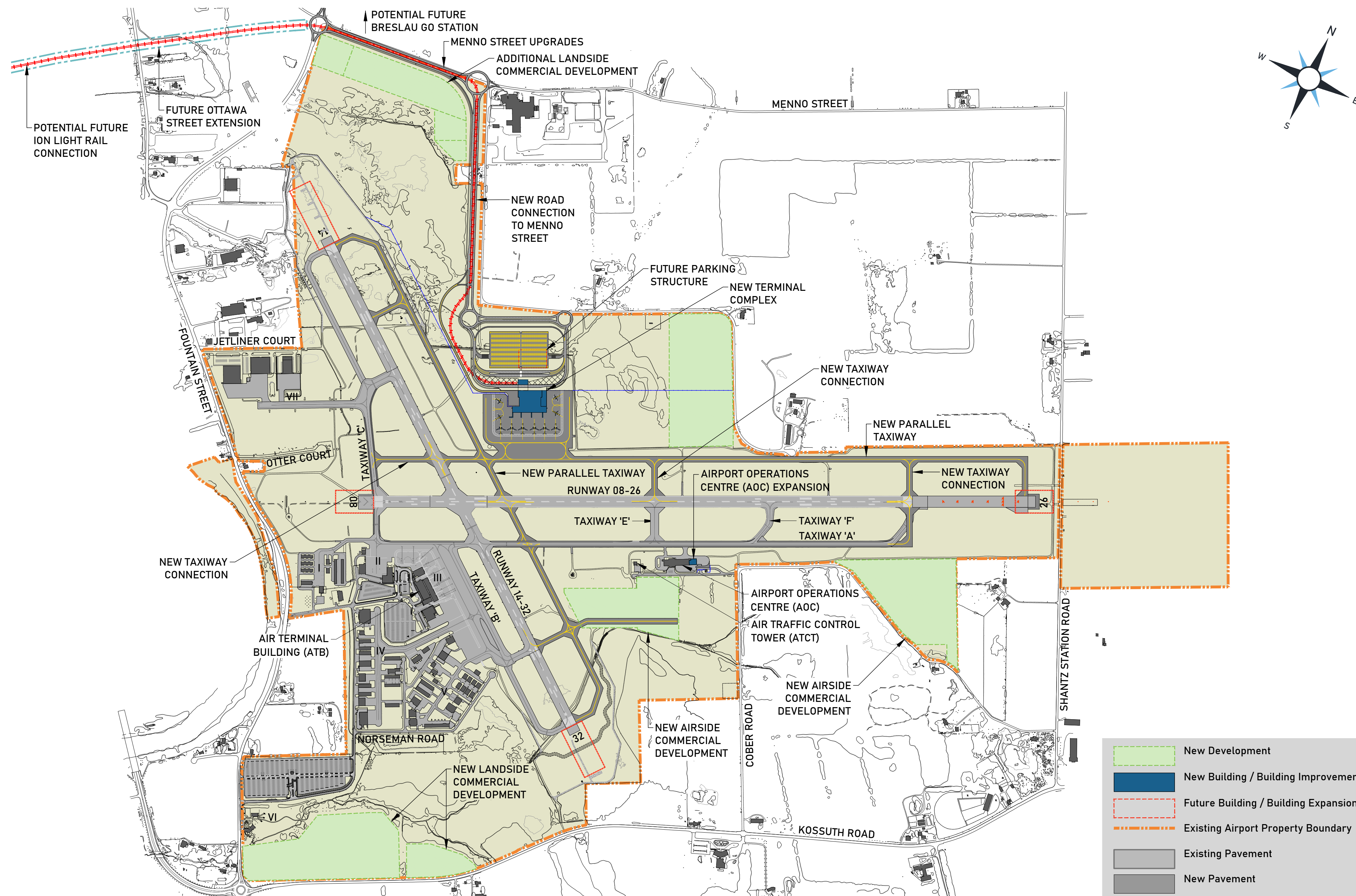


- Construct terminal building expansion to accommodate 1.5 Million Annual Passengers
- Construct Runway 08-26 Extension
- Design future terminal building and entrance road
- Design future parallel taxiways
- Expand surface parking
- Prepare additional development lands

Trigger-based Infrastructure Planning

The following stages outline the way the airport will approach new investment in infrastructure (4/4)

Stage 4 Trigger: 1.5 Million Annual Passengers



- Construct new terminal building and entrance road
- Construct parallel taxiways
- Prepare additional development lands

Sustainability



Balancing growth and development with environmental concerns is a key area of focus in the draft Airport Growth Plan.

The goal is to grow responsibly - supporting jobs and travel while helping protect the environment for future generations.

In response, we are planning the following projects:

- Natural Heritage Management Plan - guides the enhancement of the natural ecosystem on airport lands and compensate for environmental impacts from development.
- Decarbonization Action Plan - actions that YKF is taking to move towards net-zero by 2050, such as electrifying the airport fleet, applying sustainable development policies, collecting energy use data, and evaluating potential onsite renewable energy options.
- Explore options for on-site renewable energy
- Indigenous Landscape Initiative - exploring a partnership to create an outdoor gather space and guide the interpretation of airport parcels that have clear evidence of Indigenous land use over 10,000 years.

Which of these sustainability initiatives are most important to you?

Carbon Emissions/ Decarbonization	Water Conservation	Air Quality
Sustainable Transportation To/From the Airport	Protecting Wildlife in the Area	Protecting Green Space
Energy Use/ Renewable Energy	Noise Levels	Green Development Standards

Other

Grab a sticky note and let us know!

Looking Ahead



Our community's population is growing.

By 2051, it is expected that over 1 Million residents will call Waterloo Region home.

When you think about this airport in 20 years, what do you hope it will contribute most to our community?

Place a dot on all that apply:

More Air Travel
Destinations

More Airline
Providers

More Sustainable
Travel Options

Environmental
Leadership

More Jobs in Aviation
and Aerospace

A Community
Transportation hub

More Education
Opportunities
(flight training, etc.)

Grab a sticky
note and let
us know!

Other

Thank You!

We appreciate you taking the time to visit us today.

Is there anything else you would like to share?

Grab a sticky
note and let
us know!



More information on the Airport Growth Plan can be found at:
www.EngageWR.ca/YKF-growth-plan